

KIDS FOR YAH

VOLUME 10 ISSUE 1

January 2016

Leftover Customs

Now that Christmas is finally over, we find that pagan celebrations continue with New Year's, Valentines Day, and Easter. It is remarkable that many pagan holidays and customs actually find their roots in ancient sun worship, more so than moon worship, although that, too, was practiced, along with worship of all the planetary bodies. Long ago, people did not understand the changing seasons.

Winter was particularly difficult for ancient peoples. It was often a precarious time of struggling just to survive! Crops didn't grow, and the cold temperatures made life miserable for many. Many people died during winter in ancient times. So people began to look at the sun as their life-source, therefore creating many customs to honor the various sun deities. They believed that these strange customs would ensure the return of the sun and therefore their survival for yet another year!

The first record of January being thought of as a new year was in 153 B.C.E and it was implemented by a sun-worshipping Roman emperor. Yahweh's people know that spring actually begins the real new year. It only makes sense, as why should anyone begin a new year in the dead of winter?



Spring is the time of new life and growth! We joyfully look forward to spring, when Yahweh's people can once again celebrate the real Holy Days!

Inside this issue:

Leftover Customs	1
What do you think?	2
Ready for a sandwich?	3
Word Search	4

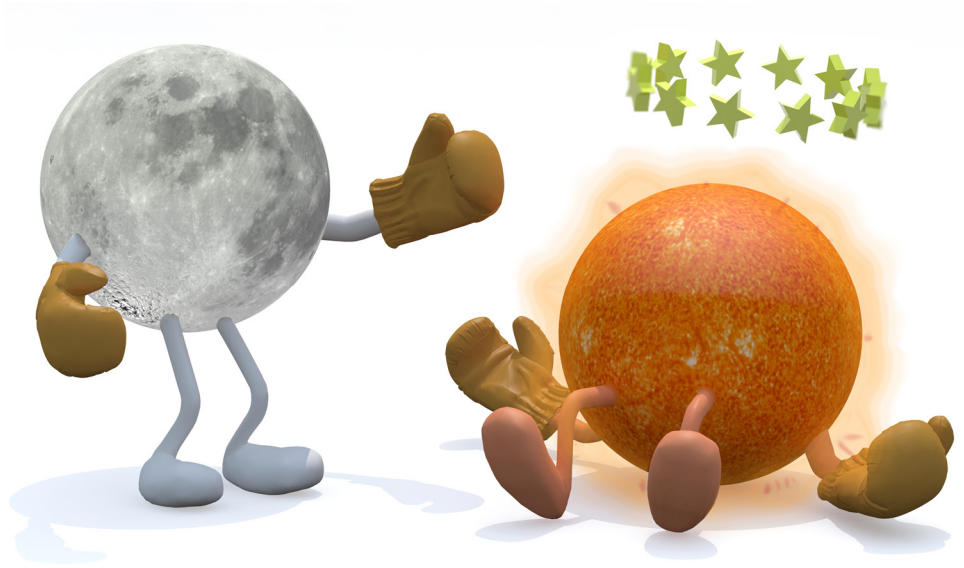
...These are Yahweh's appointed festivals, which you are to proclaim as official days for holy assembly. You have six days each week for your ordinary work, but the seventh day is a Sabbath day of complete rest, an official day for holy assembly. It is Yahweh's Sabbath day, and it must be observed wherever you live. In addition to the Sabbath, these are Yahweh's appointed festivals, the official days for holy assembly that are to be celebrated at their proper times each year.

Leviticus 23:2-4 NIV

What do you think?

1. What were some things ancient people worshipped?

- A. Planetary bodies.
- B. Sun
- C. Moon
- D. All of the above.



2. What was the most common form of worship?

- A. Sun worship.
- B. Plant worship.
- C. Animal worship.
- D. Star worship.

3. In the ancient world, what season was the most difficult to survive?

- A. Spring
- B. Summer
- C. Fall
- D. Winter



4. Why so?

- A. Crops did not grow.
- B. Cold temperatures made living conditions miserable.
- C. They couldn't go sledding because they had to stay inside.
- D. A. and B. are best.

5. What season does Yahweh begin His new year?

- A. Winter
- B. Fall
- C. Spring
- D. Summer



Ready for a sandwich?

What's your favorite sandwich? Peanut butter and jelly, roast beef and Swiss, or turkey and cheddar with extra mustard? Did you know the Bible mentions bread numerous times? Let's see if you can answer the following questions pertaining to bread. Look up the Scriptures provided.

Who brought out bread and wine? (Genesis 14:18)

Who fed bread to three angels? (Genesis 18:6)

Who was given bread and sent with her child into the wilderness? (Genesis 21:14)

Who sent the Israelites to Egypt for grain to make bread? (Genesis 42:1-2)

Who swapped bread for horses? (Genesis 47:17)

Who complained about the bread Yahweh sent them? (Numbers 21: 5-6)

Who said that, Man shall not live by bread alone? (Deuteronomy 8:3)

Who told Ruth to eat bread with vinegar (Ruth 1:14)

Who was distressed because he had no bread to take to a prophet? (1 Samuel 9:7)

Who sent King Saul a donkey loaded with bread? (1 Samuel 16:20)

Make your own Silly Putty!

Please do not try this without your parents permission and assistance!

Simply mix 2 T. of cornstarch with 1 1/2 T. of liquid dish soap. If it's runny, add more cornstarch. If it's dry, add more dish soap.



Yahweh's Assembly in Yahshua
 2963 County Road 233
 Kingdom City, Missouri 65262

Main Line: 1-573-642-4100
 Toll Free: 1-877-642-4101
 Fax Line: 1-573-642-4104
 Website: www.KidsForYah.org



Why spring begins a new year

GROWTH NEWNESS LIFE WARMTH PLANTING

CROPS RAIN FLOWERS LEAVES GARDENS

Q P K H K L L T F O S R U H O
 D I L Z T L E L J E S A G T G
 F L M A N W O S V Z V I S M L
 A N I S N W O A I B N N P R Q
 N E D Y E T E R S N E D R A G
 G W E R Y L I H G Z U U Z W L
 Y N S L X D W N H M Y H V N A
 F E O B I N B N G D T F S S S
 I S Q K N F Q X L D R C D N I
 X S K S Z P E C R O P S Q L Y